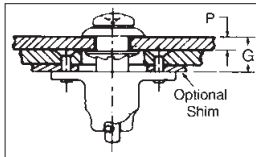


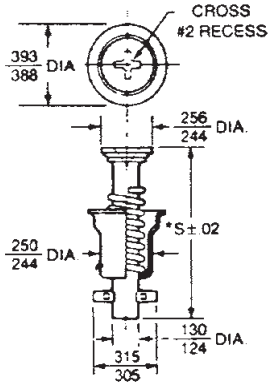
Camloc Quarter-Turn Fasteners

Many late model formula cars and sports racers use Camloc quarter-turn fasteners as standard equipment. Because they are smaller and weigh less than the more traditional Dzus fasteners, Camlocs are also becoming popular when rebuilding older race cars. When replacing or ordering spares for an existing application, check the small number stamped

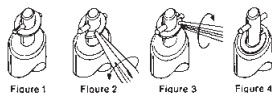
on the head of the Camloc stud. This shows the dash number which indicates grip length. Having the correct grip length is fairly critical to achieving the proper tension. All of the Camlocs that we stock have a #2 Phillips type head. These are interchangeable with equivalent studs with other head styles and seem to be preferred by most racers.



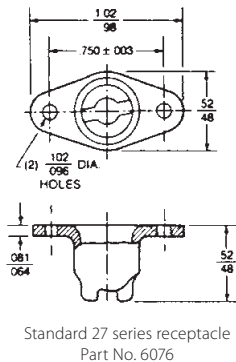
This drawing shows how to measure grip (G dimension) for the **26 or 27 Series** when using a standard receptacle. This drawing shows the 26 series stud. The 27 series is the same except that the head is flush. (We don't stock the 26 series.)



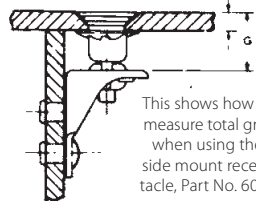
Typical 27 series stud
Part No. 6070-xx
S=.58+(.03 x Dash No.)



Installation procedure of split ring retainers, Part No. 6073 and 6075

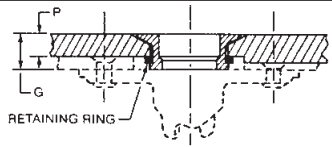


Standard 27 series receptacle
Part No. 6076

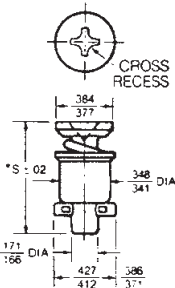


This shows how to measure total grip when using the side mount receptacle, Part No. 6077

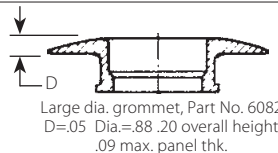
This drawing shows how to measure grip (G dimension) for the **40 Series** when using a standard receptacle and flush grommet. Add 0.026" when using standard grommet or 0.05" when using large diameter grommet (D dimensions in grommet drawings).



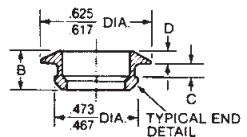
RETAINING RING



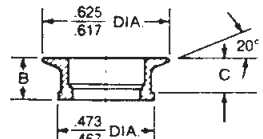
Typical 40 series stud, Part No. 6080-xx
S=.62+(.03 x Dash No.)



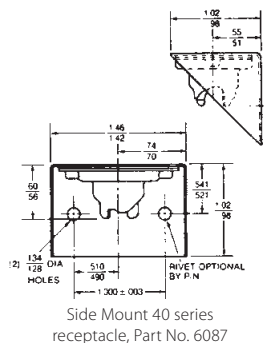
Large dia. grommet, Part No. 6082
D=.05 Dia=.88 .20 overall height
.09 max. panel thk.



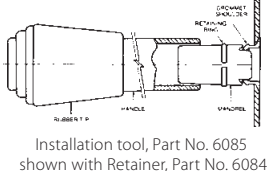
Standard Grommet, Part No. 6081
B=.197 C=.147 D=.026
.094 max. panel thk.



Flush style grommet, Part No. 6083
B=.197 C=.170 .117 max. panel thk.



Side Mount 40 series receptacle, Part No. 6087



Installation tool, Part No. 6085
shown with Retainer, Part No. 6084

27 Series Light-Duty Camloc Fasteners

The 27 series Camlocs are rated for 200 pounds working strength (ultimate tensile strength is 300 pounds). They are ideal for light-duty fastening when a flush head is desired.

27 Series Studs and Related Items Description	Total Grip "G" (see drawing)	Part No.	Price each
Camloc 27S3-1 Stud, .61" stud length	.030 - .059	6070-01	\$4.29
Camloc 27S3-2 Stud, .64" stud length	.060 - .089	6070-02	\$3.99
Camloc 27S3-3 Stud, .67" stud length	.090 - .119	6070-03	\$6.49
Camloc 27S3-4 Stud, .70" stud length	.120 - .149	6070-04	\$4.79
Camloc 27S3-5 Stud, .73" stud length	.150 - .179	6070-05	\$4.79
Camloc 27S3-6 Stud, .76" stud length	.180 - .209	6070-06	\$5.89
Camloc 27S3-7 Stud, .79" stud length	.210 - .239	6070-07	\$5.19
Camloc 27S3-8 Stud, .82" stud length	.240 - .269	6070-08	\$7.99
Camloc 27S3-9 Stud, .85" stud length	.270 - .299	6070-09	\$4.29
Camloc 27S3-10 Stud, .88" stud length	.300 - .329	6070-10	\$5.89
Camloc 27S3-11 Stud, .91" stud length	.330 - .359	6070-11	\$5.19
Camloc 27S3-12 Stud, .94" stud length	.360 - .389	6070-12	\$11.49
Standard Retaining Ring (holds stud assembly stationary in panel)		6071	89¢
Retaining Ring for thin, dimpled panels (holds stud assembly stationary)		6072	\$1.39
Split Ring Retainer (studs move freely when not latched)		6073	69¢
Installation Tool for #6071 and #6072 Retaining Rings		6074	\$28.49
Camloc 2600-ES Spring Tab with extruded hole (see page 106)		6078	\$8.29
Standard Receptacle for 27 series stud assemblies		6076	\$3.49
Side Mount Receptacle for 27 series studs assemblies		6077	\$6.99

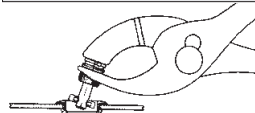
40 Series Heavy-Duty Camloc Fasteners

The 40 series Camlocs are rated for 700 pounds working strength (1050 pounds ultimate strength). They are designed to be used with a metal grommet to help spread the attachment forces. The large diameter grommet is particularly useful in soft materials such as fiberglass. Grommets can be mounted in thicker panels than shown by counter-boring or spot-facing the back of the panel.

40 Series Studs and Related Items Description	Total Grip "G" (see drawing)	Part No.	Price each
Camloc 40S5-1 Stud, .65" stud length	.051 - .080 *	6080-01	\$5.69
Camloc 40S5-2 Stud, .68" stud length	.081 - .110 *	6080-02	\$5.69
Camloc 40S5-3 Stud, .71" stud length	.111 - .140 *	6080-03	\$5.69
Camloc 40S5-4 Stud, .74" stud length	.141 - .170 *	6080-04	\$5.69
Camloc 40S5-5 Stud, .77" stud length	.171 - .200 *	6080-05	\$5.69
Camloc 40S5-6 Stud, .80" stud length	.201 - .230 *	6080-06	\$5.69
Camloc 40S5-7 Stud, .83" stud length	.231 - .260 *	6080-07	\$5.89
Camloc 40S5-8 Stud, .86" stud length	.261 - .290 *	6080-08	\$5.89
Camloc 40S5-9 Stud, .89" stud length	.291 - .320 *	6080-09	\$5.99
Camloc 40S5-10 Stud, .92" stud length	.321 - .350 *	6080-10	\$6.69
Camloc 40S5-11 Stud, .95" stud length	.351 - .380 *	6080-11	\$6.49
Camloc 40S5-12 Stud, .98" stud length	.381 - .410 *	6080-12	\$6.49
Camloc 40S5-14 Stud, 1.04" stud length	.441 - .470 *	6080-14	\$6.79
Camloc 40S5-16 Stud, 1.10" stud length	.501 - .530 *	6080-16	\$6.79
Camloc 40S5-18 Stud, 1.16" stud length	.561 - .590 *	6080-18	\$6.89
Camloc 40S5-20 Stud, 1.22" stud length	.621 - .650 *	6080-20	\$6.89
Camloc 40S5-22 Stud, 1.28" stud length	.681 - .710 *	6080-22	\$8.19
Camloc 40S5-24 Stud, 1.34" stud length	.741 - .770 *	6080-24	\$7.99
Camloc 40S5-26 Stud, 1.40" stud length	.801 - .830 *	6080-26	\$8.99
Camloc 40S5-28 Stud, 1.46" stud length	.861 - .890 *	6080-28	\$9.99
Standard Grommet for Heavy-Duty Camloc Studs		6081	\$3.89
Large Diameter Grommet for Heavy-Duty Camloc Studs		6082	\$4.89
Flush Style Grommet for Heavy-duty Studs (requires countersink)		6083	\$3.19
Retainer Ring for any of the above grommets		6084	\$1.19
Split Ring Retainer to hold -16 and longer studs in grommets		6075	69¢
Camloc 4002-SN Spring Tab with .075" Grommet (see page 106)		6079	\$9.99
Installation Tool for #6084 grommet retainer (makes job much easier)		6085	\$29.99
Standard Receptacle for 40 series stud assemblies		6086	\$7.99
Side Mount Receptacle for 40 series studs with .06" float *		6087	\$15.79

* Add 0.03" to the Grip measurement when using #6087 Side Mount receptacle!

Camloc Installation Pliers



This tool will work with both the light and heavy-duty Camloc stud assemblies. In order to install the studs, it is necessary to compress the internal spring. This can be quite difficult without the proper tool.

Camloc Installation Pliers.....Part No. 6089..... \$39.99