

Timing and Scoring

MYLAPS (formerly AMB) Transponders

AMB / MYLAPS Transponders are required by many auto racing organizations, from club to pro. A unique identification number encoded in each transponder is transmitted to a receiving loop embedded in the track at the start/finish line. Each time the transponder passes the loop, the MYLAPS timing and scoring system recognizes the transponder and matches it to the correct car. Some organizations specify the transponder mounting location on the car (check your rule book). The transponder must be mounted upright, with a clear view of the track surface. AMB / MYLAPS transponders are required by SCCA, NASA, PCA, MCSCC, VSCDA, and many others.



X2 Rechargeable Transponder, Part No. 5001-50x
Clockwise from lower left: X2 Transponder, USB cable, quick-release mounting bracket. The X2 RaceKey is in the center of the photo.



X2 Direct-Wire Transponder Kit, Part No. 5001-51x
Clockwise from lower left: X2 RaceKey Mount, power cable, USB cable, X2 RaceKey, X2 Transponder, permanent-mount hardware, quick-release mount bracket. The cable in the center connects the X2 Transponder to the X2 RaceKey Mount in the car.

The **X2 Rechargeable Transponder** mounts to a quick-release bracket. Just 4 hours of charging using the included X2 RaceKey provides 4 days of run time. A 2-color LED indicates battery condition and subscription status. The X2 Rechargeable can be used on any car, but it is required for cars running an electrical system other than 12 volts (6V, 16V, 24V, or magneto with no battery). Includes X2 Transponder, quick-release mounting bracket, X2 RaceKey, and USB cable.

- X2 Rechargeable Transponder, 5 Year SubscriptionPart No. 5001-505..... \$410.28
- X2 Rechargeable Transponder, 2 Year SubscriptionPart No. 5001-502..... \$234.58
- X2 Rechargeable Transponder, 1 Year SubscriptionPart No. 5001-501..... \$159.81
- Includes X2 Transponder, X2 RaceKey, USB cable, and transponder mounting bracket.
- Extra Mounting Bracket only for X2 TransponderPart No. 5001-531..... \$8.49

The flexible **X2 Direct-Wire Transponder** includes the X2 Transponder, plus everything needed to power it from your car's 12 volt battery. Requires only 2 connections to your car's 12 volt electrical system (power and ground). Current draw is 0.15 amps at 12 volts. The included X2 RaceKey has a 2-color LED to indicate subscription status. **Hint:** Wire the transponder to your ignition switch. You will never forget to turn it on or off! Kit includes X2 Transponder, quick-release mounting bracket, permanent mount hardware, X2 RaceKey, X2 RaceKey Mount, USB cable, and cables to connect the X2 RaceKey Mount to the X2 Transponder and to the car's electrical system.

- X2 Direct-Wire Transponder, 5 Year SubscriptionPart No. 5001-515..... \$475.70
- X2 Direct-Wire Transponder, 2 Year SubscriptionPart No. 5001-512..... \$283.18
- X2 Direct-Wire Transponder, 1 Year SubscriptionPart No. 5001-511..... \$215.89
- Includes X2 Transponder, X2 RaceKey, X2 RaceKey mount, transponder mount, and cables.

Handheld Timers



The **AiM Multichron** is a top-of-the-line handheld timer designed to time up to four cars at once. Start and stop lap times separately or simultaneously. If the cars pass within a few seconds of each other, you can just press the Lap button and sort them out later! The backlit display shows lap times for all four cars with a flag if a driver records a personal best lap. Memory can recall 99 laps for each car with up to 9 splits per lap. Fastest lap times for all drivers can also be quickly displayed. A secondary backup battery protects the memory of the primary battery dies. Titanium grey only.

- AiM Multichron TimerPart No. MC-999..... \$159.99



The versatile **Robic SC-899** can time up to three cars at once on a single screen. Each line displays lap or split time, with either speed or a lap counter to 999. Each car can store up to 180 laps in memory for a total of 540 laps. Three countdown timers can be set in 0.1 second increments up to 24 hours and started separately or simultaneously. The wide-case design fills your hand comfortably, with buttons right at your fingers and thumb. Accurate to 0.001 second over 1 hour. Royal blue with black trim.

- Robic SC-899 TimerPart No. 5078-106..... \$58.99

See page 121 for pit signalling boards!

See our website for many more Robic timers!

Racing Record Keeping

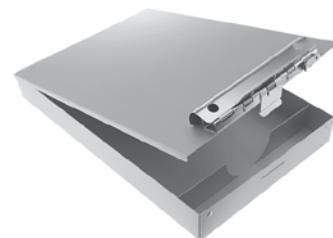
"Record keeping is totally ignored by 90% of all racers. It is **not** ignored by the 10% of racers who win 90% of the races." — Carroll Smith, **Prepare to Win**

Accurate records of every race weekend and test day are a valuable asset for any driver or race team. They can even help increase the resale value of your racecar! Our **Racing Data Notebook** help you to keep a clear, permanent record of every adjustment made to the car and every lap time recorded. **Lap timing sheets** have space for up to 6 sessions of 20 laps each (or 3 sessions of 40 laps each), adjustment and handling notes, and a pre-race checklist. **Data sheets** have sections on engine, tire data, and chassis settings as well as room for general notes. The sheets are printed on heavy card stock for durability and longevity. The card stock is tinted a very light grey to avoid eyestrain on sunny days at the track. The **Deluxe Notebook** set consists of a 3-ring binder stocked with 30 lap timing sheets and 30 vehicle data sheets.

- Racing Data Notebook, Deluxe Edition Part No. 5205-01 \$14.99
- Includes 30 sets of data and timing sheets (total of 60 sheets)

Refill Packs contain 30 lap timing and 30 vehicle data sheets printed on heavy index card stock. They are unbound, 3-hole punched, and arranged with the lap sheets and data sheets in an alternating sequence.

- Refill Pack, printed on heavy index card stock Part No. 5205-Refill \$9.99
- Contains 30 sets of vehicle data sheets and lap timing sheets (total of 60 sheets). Will also fit the Storage Clipboard at right.



Clipboard with Storage Compartment The cover of this handy clipboard lifts up to expose a 1.5" deep storage compartment. The storage area is divided into a section for 8 1/2" x 11" (letter size) papers and a section for pens and pencils. Lightweight yet sturdy aluminum construction. Measures 13 3/4" Long x 9" Wide x 1 5/8" Thick (2 3/4" overall including clip).

- Clipboard with Storage Compartment Part No. 5014..... \$31.99