

Self-Ejecting Quarter-Turn Fasteners, EHF5 Type

Quarter-Turn Stud Assemblies You won't lose these captive fastener assemblies! The plated steel stud assembly is designed to be riveted to the removable panel. The studs are spring-loaded to prevent unlatched fasteners from hanging up on the mating surface. This makes it easier to install large body panels that have many fasteners. An added benefit to the spring-loaded design is that an unfastened stud pops up to give a visual signal that it has not been latched. The basic stud diameter is $\frac{5}{16}$ inch, with a $\frac{3}{4}$ inch diameter slotted head. The countersunk stud assembly requires a 0.70" diameter hole through each panel. With proper mounting the rated strength is 85 pounds in tension and 200 pounds in shear. See chart at right for stud and spring size recommendation.

- Quarter-Turn Stud, .52" long (.40" grip) Part No. 3004 \$2.39
- Quarter-Turn Stud, .62" long (.50" grip) Part No. 3005 \$2.39
- Quarter-Turn Stud, .72" long (.60" grip) Part No. 3006 \$2.59
- Quarter-Turn Stud, .82" long (.70" grip) Part No. 3007 \$2.89
- Quarter-Turn Stud, .92" long (.80" grip) Part No. 3008 \$2.99

Self-Ejecting Wing-Head Stud Assemblies Same as the stud assemblies listed above except with a wing-head stud for easy operation without tools of any kind.

- Wing-Head Stud, .52" long (.40" grip) Part No. 3020 \$2.79
- Wing-Head Stud, .62" long (.50" grip) Part No. 3015 \$2.99
- Wing-Head Stud, .72" long (.60" grip) Part No. 3021 \$3.29

Spring Receptacles Designed to mate with the above stud assemblies. If you do not know which size is required, order the shortest spring. If the assembly is not tight enough, simply add spacing washers to move the spring away from the stud assembly.

- .200 inch spring height Part No. 3010 64¢
- .225 inch spring height Part No. 3011 64¢
- .250 inch spring height Part No. 3012 64¢
- .275 inch spring height Part No. 3013 64¢

Weld Plate Spring Receptacles for $\frac{5}{16}$ " Studs



These handy receptacles consist of a spring receptacle pre-riveted to a 1.50 x 2 inch x 0.062 inch thick steel plate which can be welded to the support structure. The plate can be cut or bent to fit a wide range of applications. These plates are very popular with chassis builders and are especially useful on tube-frame chassis. Please see our website for a full stud-receptacle application chart.

- .200" Spring (use with 3004 stud for 0.100-0.124" panel) ... Part No. 3019-001-.200... \$1.99
- .225" Spring (use with 3004 stud for 0.125-0.150" panel) ... Part No. 3019-001-.225... \$1.99
- .250" Spring (use with 3004 stud for 0.150-0.174" panel) ... Part No. 3019-001-.250... \$1.99
- .275" Spring (use with 3004 stud for 0.175-0.199" panel) ... Part No. 3019-001-.275... \$1.99

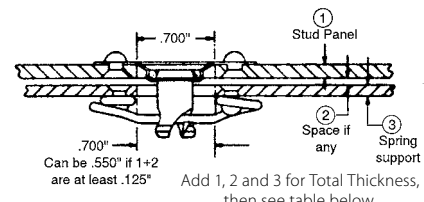
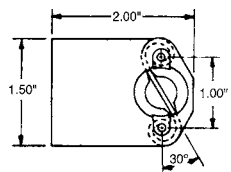
Quarter-Turn Fastener 82 Piece Trackside Kit – Save \$35!



Our handy quarter-turn fastener kits are a very economical way to ensure that you always have the supplies you need on hand. The **82 Piece Trackside Kit** is designed as a compact, easy-to-carry spares kit for quick repairs at the track. Includes one #3105 Fastener Tool; 10 each of #3004, 3005, 3006, & 3007 Quarter-turn stud assemblies; 10 each of #3010, 3011, 3012, & 3013 spring receptacles, and one #4330 durable storage box to keep things organized. **Save over \$35 compared to the individual piece prices!**

- 82 Piece Quarter-Turn Fastener Trackside Kit Part No. 3025 \$108.99

Buy more and save! Call or visit our website for quantity discounts.



Total Thickness*	Stud Part No.	Spring Part No.
.120 thru .149	3004	3013
.150 thru .174	3004	3012
.175 thru .199	3004	3011
.200 thru .224	3004	3010
.220 thru .249	3005	3013
.250 thru .274	3005	3012
.275 thru .299	3005	3011
.300 thru .324	3005	3010
.320 thru .349	3006	3013
.350 thru .374	3006	3012
.375 thru .399	3006	3011
.400 thru .424	3006	3010
.420 thru .449	3007	3013
.450 thru .474	3007	3012
.475 thru .499	3007	3011
.500 thru .524	3007	3010
.520 thru .549	3008	3013
.550 thru .574	3008	3012
.575 thru .599	3008	3011
.600 thru .624	3008	3010

* Includes the total thickness of the outer panel, inner panel and any space between them (pop rivet head thickness).

In addition to these $\frac{5}{16}$ inch diameter fasteners, we now offer the larger $\frac{3}{8}$ inch diameter series. Please see the bottom of this page for details.

Quarter-Turn Fastener 412 Piece Constructor's Kit – Save \$270!



Our **412 Piece Constructors Kit** comes in a sturdy 18-compartment box that houses over 400 pieces. This is a great kit for Fab shops, Prep shops, or anyone planning a complete chassis rebuild. Included in the assortment are 40 pieces of our #3004, 3005, 3006, & 3007 Quarter-turn stud assemblies; 30 pieces of #3008; 20 Wing Stud assemblies, #3015; 40 of each spring, #3010, 3011, 3012, & 3013; 40 pieces of the #3019-001-.200 Weld Plate; one #3105 Fastener tool, and a durable storage box. **SAVE OVER \$270 off the individual piece price!**

- 412 Piece Quarter-Turn Fastener Constructors Kit Part No. 3026 \$499.00

Self-Ejecting Quarter-Turn Fasteners, EHF6 Type

These quarter-turn fasteners are similar to the EHF5 Type described above, except the stud is a larger $\frac{3}{8}$ " nominal diameter (0.4") with a $\frac{3}{4}$ " OD countersunk head. The larger backing plate and larger spring both have $\frac{1}{8}$ " rivet holes spaced $1\frac{3}{8}$ " apart.

- Quarter-Turn Stud, .56" long Part No. 3022-400 \$2.29
- Quarter-Turn Stud, .66" long Part No. 3022-500 \$2.19
- Quarter-Turn Stud, .76" long Part No. 3022-600 \$2.29
- Wing-Head Stud, .56" long Part No. 3023-400 \$3.29
- Wing-Head Stud, .66" long Part No. 3023-500 \$3.39
- Wing-Head Stud, .76" long Part No. 3023-600 \$3.29

- .250 inch spring height Part No. 3024-250 69¢
- .275 inch spring height Part No. 3024-275 64¢

Total Thickness*	Stud Part No.	Spring Part No.
.165 thru .189	3022-400 or 3023-400	3024-250
.190 thru .214	3022-400 or 3023-400	3024-275
.265 thru .289	3022-500 or 3023-500	3024-250
.290 thru .314	3022-500 or 3023-500	3024-275
.365 thru .389	3022-600 or 3023-600	3024-250
.390 thru .414	3022-600 or 3023-600	3024-275

* Includes the total thickness of the outer panel, inner panel and any space between them (pop rivet head thickness).



Flat Blade Fastener Tool

This stainless steel tool has three different radii to exactly fit all commonly used slotted head studs. Helps to prevent damage to the stud and to body panels.

- Flat Blade Style Tool Part No. 3105 \$9.49



Screwdriver-Style Fastener Tool

The end of this tool has a radius to fit slotted countersunk quarter-turn fasteners shown on this page. The screwdriver handle allows a good, comfortable grip for easy operation.

- Screwdriver-Style Tool ... Part No. 3158-002 \$23.99



Countersinking Tool for Flat Head Studs

This two-piece kit includes a punch and anvil to dimple metal panels for the countersunk quarter-turn fasteners shown on this page.

- Countersinking Tool Part No. 3158-001 \$47.99



Receptacle Spring Height Adjuster

If you just can't get the measurements right, or if you don't have the right spring on hand, you can use this tool to bend the receptacle spring. Turning the plastic knob pulls the spring closer to the panel for a looser fit.

- Spring Adjusting Tool ... Part No. 3158-004 \$47.99