

## Driver Restraint Mounting Accessories

### End Plates



Flat Bolt-In Part No. 2382-6    Bent Bolt-In Part No. 2388-6    Flat Bolt-In Part No. 2385    Snap-In Part No. 2386

**Bolt-In End Plates** Available either flat or bent with  $\frac{3}{8}$ " or  $\frac{1}{2}$ " mounting hole.  
**For two or three inch wide straps (see diagram below right for installation):**  
 $\frac{3}{8}$  inch Mounting Hole **FLAT Bolt-In End Plate** ..... Part No. 2382-6 ..... \$4.99  
 $\frac{3}{8}$  inch Mounting Hole **BENT Bolt-In End Plate** ..... Part No. 2388-6 ..... \$4.99  
**For 3" wide straps – has a 3" wide slot and should NOT be used with 2 inch straps.**  
 $\frac{1}{2}$  inch Mounting Hole **FLAT Bolt-In End Plate** ..... Part No. 2385 ..... \$4.49  
 With 3 inch wide slot - for 3 inch straps only.

**Snap-In End Plate** To be used with an eyebolt such as our Part Nos. 2384 or 2389 (sold separately at right). A spring-loaded retainer tab provides secure attachment yet allows easy removal when necessary. Can be used to convert a wrap-around mount or bolt-in belt to snap-in (not recommended if the existing bolt-in end plate is sewn on).  
**Snap-In End Plate Only, each** ..... Part No. 2386 ..... \$5.99

### Hardware Kits



Above: Bolt-in Hardware Kit Part No. 2383    Above: Eyebolt Hardware Kit Part No. 2384



Left: Short Forged Eyebolt Part No. 2389

Right: Eyebolt Backing Plate Part No. OMP-DB418/6 (Set of 6; one shown)

These items may come in handy when installing your harness or when converting a wrap-around mount to a bolt-in or snap-in mount.

**Bolt-In Hardware Kits** Each kit includes two fully threaded high-strength bolts, two AN365 locknuts, and two AN970 large area backup washers. One kit is enough to install both ends of one lap belt.

$\frac{3}{8}$  inch Bolt-In Hardware Kit ..... Part No. 2383-6 ..... \$5.59  
 With  $\frac{3}{8}$  - 24 x 2" fully threaded bolts.  
 $\frac{1}{2}$  inch Bolt-In Hardware Kit ..... Part No. 2383-8 ..... \$9.89  
 With  $\frac{1}{2}$  - 20 x 2.5" fully threaded bolts.

**Forged Eyebolt Hardware Kit** Includes 1 each forged eyebolt with  $\frac{7}{16}$ -20 thread (1  $\frac{1}{2}$ " thread length), AN365 locknut, and AN970 large area backup washer. One kit is enough for one end of a lap belt. Never use bent eyebolts!

**Forged Eyebolt Hardware Kit, one side** ..... Part No. 2384 ..... \$5.99  
 Note: Mounts only a single point.

**Short Forged Eyebolt** This high-quality  $\frac{7}{16}$ -20 forged eyebolt from OMP has a Shank length of about 0.85". This short eyebolt is ideal for vehicles that already have  $\frac{7}{16}$ -20 welded nuts in the chassis for seat belt mounting. FIA approved.

**Short  $\frac{7}{16}$ -20 Forged Eyebolt, each** ..... Part No. 2389 ..... \$4.89

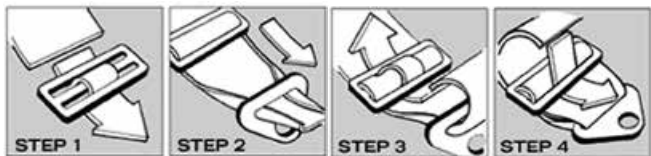
**Eyebolt Backing Plates** These FIA-approved plates are perfect for mounting either of the forged eyebolts above. The beefy 2" x 3" x  $\frac{1}{8}$ " thick steel plates are designed to spread out the load from your harness and reinforce the floor of your car. The integral  $\frac{7}{16}$ -20 female nut accepts a standard eyebolt. FIA approved. Set of 6 is enough to install one complete 6-point harness.

**Eyebolt Backing Plates, set of 6** ..... Part No. OMP-DB418/6 ..... \$39.00

### Miscellaneous Hardware



**Wide 3 Bar Adjuster** Part No. 2381  
**Narrow 3 Bar Adjuster** Part No. 2380  
**Anti-Vibration Spring** Part No. 2387  
**3 Bar Adjuster for 1.75" or 2" wide straps, each** ..... Part No. 2380 ..... \$6.49  
**3 Bar Adjuster for 3" wide straps, each** ..... Part No. 2381 ..... \$6.99  
**Anti-Vibration Spring for 3" quick-adjusters, each** ..... Part No. 2387 ..... \$2.99  
 Helps to prevent shoulder harness or lap belt adjuster slippage.



Follow these steps to convert a wrap-around mount to a bolt-in or snap-in mount.

### Harness Sleeves

Simpson Harness Sleeves Part No. 2129-Color



OMP Harness Sleeves Part No. OMP-DB450-3-Color



**Harness Sleeves** are padded to cushion against bruises and discomfort from your shoulder harness straps. These pads wrap around the belts and are secured with Velcro® for quick and easy installation or removal. All of these sleeves are designed to fit standard 3" wide shoulder straps. They are typically not used with a HANS® device. Available in Black, Blue, or Red. Sold in pairs.

**Simpson Woven Nomex® Harness Sleeves, Pair** ..... Part No. 2129-Color ..... \$49.99  
**OMP Brushed Nylon Harness Sleeves, Pair** ..... Part No. OMP-DB450-3-Color ..... \$25.00

### Backsaver Pads



See page 162 for Creafoam Bead Seat Insert Kits and Two-part Seat Foam Kits to customize the fit of your seat!

**The Backsaver** was originally developed for military combat pilots. Its fluid yet firm support minimizes discomfort and greatly reduces fatigue under grueling conditions. Backsaver foam absorbs up to 97% of impact energy resulting in low rebound. Although the cushion is only 1" thick, it will not bottom out because of its high energy absorption. A rubberized, high-friction bottom surface keeps the pad in place on the seat. A satiny material is bonded to the top of the pad to provide a comfortable surface for the driver. The Backsaver acts like a gasket between driver and seat to ensure perfect contact for precise feedback. We now offer a larger size that costs nearly 15% less per square inch than the standard size pad. Pads can be cut with a scissors or sharp knife.

**Standard Backsaver Pad, 16" x 18"** ..... Part No. 3439 ..... \$74.99  
**Extra Large Backsaver Pad, 18" x 36"** ..... Part No. 3438 ..... \$141.99

### Headrest Padding, SFI 45.2 Approved



See page 34 for SFI 45.1 Approved Roll Bar Padding

**SFI 45.2 Headrest Padding** EIS (Energy Impact Systems) W50 is a high-density foam developed specifically to meet the headrest material standards for CART and other pro racing organizations. This highly-engineered open-cell foam is very resilient, bouncing back instead of permanently crushing when hit. Its resiliency allows it to absorb repeated impacts in a crash. EIS W50 is perfect for use as a headrest padding, but it can be used anywhere a rigid protective pad is needed. Meets and exceeds SFI 45.2 specifications for energy-managing padding. Supplied in 1 inch thick sheets. Machinable and sandable, cuts with a shop knife. Black only.

**SFI 45.2 Headrest Padding, 9" x 16" x 1"** ..... Part No. 2396-9x16 ..... \$19.99  
**SFI 45.2 Headrest Padding, 16" x 18" x 1"** ..... Part No. 2396-16x18 ..... \$32.99  
**SFI 45.2 Headrest Padding, 16" x 36" x 1"** ..... Part No. 2396-16x36 ..... \$63.99